



*Regina Kapral*

## Named 2011 LPSCU Fraternalist of the Year



The LPSCU is proud to announce that Regina ("Jean") Kapral of LPSCU Branch 19, Swoyersville, Pennsylvania, is our 2011 Fraternalist of the Year. Jean was nominated for this award by Mary Ann Ewasko, president of the Rev. Dianiska District, who also serves as National Chairperson of Trustees.

Jean has been a member of the LPSCU for 35 years. She is currently serving her tenth year as treasurer of Branch 19 and has been involved in Branch activities for many years. She is a member of the Rev. Dianiska District in Wilkes-Barre, where she served as secretary for nine years and as publicity chair for two years. Jean is always willing to organize and participate in all District functions, especially Join Hands Day, the annual Youth Bowling Party, Make A Difference Day, and collecting non-perishables for the St. Vincent de Paul Soup Kitchen.

Jean served two terms as a member of the LPSCU Court of Appeals, having been elected at the 1988 Convention in Orlando, Florida, and at the 1992 Convention in Las Vegas, Nevada. Jean always attended LPSCU Conventions with her mother, Pauline Romanchick, who was also active in Branch 19. Jean also served on the LPSCU's 100th Anniversary Hospitality Night Committee.

Jean's parents, John and Paul Romanchick, raised her to be a true and giving fraternalist, always doing for others. She is a dedicated fraternalist to the LPSCU.

Jean is a member of St. Nicholas Byzantine Church in Swoyersville, where she is currently a member of the Altar and Rosary Society and a past member and officer of the Mother's Club. She coordinates the haluski and pirohy projects and is a member of the church teams for parish maintenance and grounds with her husband, Andrew. She served as parish secretary for St. Nicholas Church in Swoyersville, and at St. Michael's Church in Pittston, Pennsylvania.

Jean's community service is truly remarkable. Every year she volunteers at the CEO Thanksgiving project, manning the phones. For more than 15 years, she has been a Valley Santa volunteer letter reader, as well as shopping for and wrapping gifts for needy children. For the past 35 years, she has volunteered as a vision screening aide with the local Association for the Blind, screening pre-schoolers for vision problems. She also volunteers at Candy's Place, which is a cancer resource center, and participates in their annual fundraiser walk. For many years, she has been active with Project D.J., which stands for "Donating Joy." Members gather to make quilts for distribution to local hospitals, especially for children or people in special needs. Jean also hand quilts with the quilters of Holy Trinity Church in Swoyersville for their annual fundraisers.

Jean is currently on the staff of the F.M. Kirby Center for Performing Arts in Wilkes-Barre, Pennsylvania.

On top of all of her volunteering, Jean is an excellent wife and mother. She and Andrew are the parents of three children, daughter Karen and her husband Jeffrey Werkheiser, and their children, Jessica and Eric of Orlando, Florida; son, James and his wife Leah Kapral, and their children, Rachel and Chad of Ft. Collins, Colorado; and daughter Linda and her husband Kraig Gilligan of Clermont, Florida. All of Jean's children and grandchildren are members of the LPSCU.

In nominating Regina Kapral for the 2011 LPSCU Fraternalist of the Year award, Mary Ann Ewasko stated, "Having known Jean for the past 25 years, I can truly say she is a true fraternalist, always willing to help in any way she can. If someone needs a ride, she is there to drive them. Every time I called her – and there were many phone calls – she never once refused to help."

Truly, Regina "Jean" Kapral has exhibited extraordinary acts of fraternalism within her Branch and the Rev. Dianiska District, and outstanding volunteer service within her church and community to qualify for the distinct honor of being named the 2011 LPSCU Fraternalist of the Year.

Congratulations, Jean! The LPSCU is very proud of you.

# In This Issue

Spiritual Advisor's Message	3	Illiana District Honors Mary Ann Siska	11
Branch and Okres News	4	Celebrating Our Slovak Catholic Culture	11
Board Hears Reports, Selects Counsel	4	Member Inducted Into Honor Society	11
Pilgrimage of Faith 2011	4	20 Year Endowment Life Insurance Plan	12
National Flag Day is June 14th	4	EFC Meeting Minutes	13
Letters	5	Pittsburgh Folk Festival Set	13
"Then and Now" Convention Contest	5	Flag Day Proclamation	14
"Caring by Volunteering" Winners	5	2011 Catholic High School Award	14
LPSCU 2011 Post Graduate Award	5	IFC Honors Mary Ann Siska	14
Year End Financial Report	6	Members Volunteer for Cancer Benefit	15
Member Receives SLA Scholarship	6	LPSCU Annuities	15
Young Member Performs in Ballet	7	Attention: Lehigh Valley Okres Juniors	15
Kudos for Our Zornicka	7	New Insurance Issued	15
ScriptSave Utilization Report	7	Flag Day at the Ball Park	15
Remembering Our Parents with Love	7	Members Attend Sokol's Centennial	16
CTC Supports Soup Kitchen	7	Bishop Grutka Memorial Scholarship	16
LPSCU to Honor its 2011 Graduates	8	Slovak Heritage Society Hymn Sing	17
2011 Youth Achievement Award Winner	8	LPSCU 2011 Religious Awards	17
Young Member Supports Our Troops	9	Junior Branch Journal	18-19
LPSCU Board Conference Call Minutes	10	Share Your Happy Memories	20
In Memoriam	10	CPS Actuaries 2010 Report	20

# Calendar of Events

## MAY

- 1** — Lehigh Valley Okres Mother/Daughter Luncheon at the Best Western Lehigh Valley Conference Center, Routes 22 and 512, Bethlehem, Pennsylvania. Punch reception at 11:30 a.m. followed by luncheon at noon. Call Marge Ferri (610-866-8945) or Ceil Gaughan (610/433-4610) by April 26th to make a reservation.
- 7** — Join Hands Day.
- 13-15** — Pittsburgh Folk Festival at the Monroeville Convention Center. Tickets are \$8.00 in advance, \$10.00 at the door. *More information on page 13.*
- 15** — Slovak Catholic Federation's 100th Anniversary Celebration in Scranton, Pennsylvania. Liturgy at 2:30 p.m. in the Cathedral Church of St. Peter, followed by the Centennial Banquet at the Clarion Hotel, 300 Meadow Avenue, Scranton.
- 20** — **Deadline to submit articles for July/August Zornicka.**
- 29** — St. Andrew's Svorad Abbey hosts a Celebration of Our Slovak Catholic Culture with a 1:00 p.m. Mass at the Abbey Church, 2900 Martin Luther King Jr. Blvd., Cleveland, Ohio, followed by a luncheon and presentations on the Marion Shrines in Slovakia. Cost is \$14.00 to attend. Reservations must be made by May 18. *See page 11 for more details.*
- 31** — Deadline for Lehigh Valley Okres Junior members and their adult chaperones to make a reservation to attend an IronPigs Baseball Game at Coca-Cola Park in Allentown Pennsylvania. *See July 3.*

## JUNE

- 6** — Flag Day at the Ball Park hosted by FSNEPA. *See page 15.*
- 18** — LPSCU Telephone Conference Meeting
- 30** — Deadline to apply for the LPSCU Catholic High School Award (*See page 14*) and Bishop Grutka Award (*See page 16*).

## JULY

- 3** — The Lehigh Valley Okres is hosting an outing to an IronPigs baseball game for its Junior members and their chaperones at Coca-Cola Park, Allentown, Pennsylvania, at 6:35 p.m. *See page 15 for more details.*
- 8** — Deadline to make reservations to attend the Rev. Dianiska District's Youth Bowling Party. *See July 16.*
- 16** — The Rev. Dianiska District's annual Youth Bowling Party at Modern Lanes, Exeter, Pennsylvania, from 1:00-4:00 p.m. *See page 4 for details.*
- 20** — **Deadline to submit articles for September/October Zornicka.**

continued on page 9



(USPS 699-520)



ZORNICKA (Morning Star), a bi-monthly magazine, is the official publication of the Ladies Pennsylvania Slovak Catholic Union, National Headquarters, 71 South Washington Street, Wilkes-Barre, PA 18701.

Send articles for publication to Margaret A. Ferri, Public Relations Director, 428 E. Frankford Street, Bethlehem, PA 18018. Articles must be received by the 25th of the month, five weeks prior to the issue date.

Printed by Triangle Press, 6720 Allentown Blvd., Harrisburg, PA 17112.

Periodical Postage paid at Wilkes-Barre, PA 18701 and additional entries.

Subscription Rate: Members — free; non-members — \$15.00 per year.

Postmaster: Send address changes only to: Zornicka (Morning Star), Ladies Pennsylvania Slovak Catholic Union, 71 South Washington Street, Wilkes-Barre, PA 18701.

### OFFICE HOURS AT NATIONAL HEADQUARTERS

**Monday through Friday:  
8:00 a.m. to 4:30 p.m.  
Phone: 570/823-3513  
Toll Free 888/834-6614  
Fax: 570/823-4464  
E-mail: [lpescu@lpescu.org](mailto:lpescu@lpescu.org)  
Website: [www.lpescu.org](http://www.lpescu.org)**

### SECRETARY/TREASURER

Mary Jo Savidge, 71 South Washington Street, Wilkes-Barre, PA 18701; 570/823-3513, Fax 570/823-4464; [marvjo@lpescu.org](mailto:marvjo@lpescu.org)

### BOARD OF DIRECTORS

#### SPIRITUAL ADVISOR

Rev. Philip A. Altavilla, V.E., Our Lady of the Snows Parish, 301 South State Street, Clarks Summit, PA 18411-1599; 570/587-5191; [frfrosty@epix.net](mailto:frfrosty@epix.net)

#### PRESIDENT

Theresa A. Kluchinski, 446 Mountain Oaks Drive, Laurel Run, PA 18706; 570/829-5410; [theresa@lpescu.org](mailto:theresa@lpescu.org)

#### VICE PRESIDENT

Anita Gregory, 304 Turkey Path Road, Sugarloaf, PA 18249; 570/788-3263; [anitag13@hotmail.com](mailto:anitag13@hotmail.com)

#### CHAIRPERSON OF TRUSTEES

Mary Ann Ewasko, 9 Shannon Street, Wilkes-Barre, PA 18702; 570/823-6432; [maryann101939@verizon.net](mailto:maryann101939@verizon.net)

#### TRUSTEES

Dolores M. Evanko, 173 Berner Avenue, Hazleton, PA 18201; 570/454-5547; [jje@intergrafix.net](mailto:jje@intergrafix.net)

Joan T. Hladek, 2138 Waterbury Lane E., Sycamore, IL 60178; 815/895-0431; [jhladek@lpescu.org](mailto:jhladek@lpescu.org)

Margaret Jollimore, RR 2, Box 374, Harvey's Lake, PA 18618-9512; 570/760-9790; [jollimore.m@juno.com](mailto:jollimore.m@juno.com)

Elizabeth Melko, 100 Bryn Mawr Court West #513, Pittsburgh, PA 15221; 412/242-0419; [bam0208@hotmail.com](mailto:bam0208@hotmail.com)

#### FRATERNAL ACTIVITIES DIRECTOR

Cecilia B. Gaughan, 325 Florida Avenue, Whitehall, PA 18052; 610/433-4610; [cbgaughan@msn.com](mailto:cbgaughan@msn.com)

#### PUBLIC RELATIONS DIRECTOR

Margaret A. Ferri, 428 East Frankford Street, Bethlehem, PA 18018; 610/866-8945; [margferri28@gmail.com](mailto:margferri28@gmail.com)



# Spiritual Advisor's Message

## Witnesses and Apostles of the Resurrection

Each year, as we journey through the glorious season of Easter, I often tell people that the story of the two disciples meeting the Risen Christ (Luke 24: 1-35) is my favorite Easter story. Like many people, I have a framed print of the beautiful scene of the three men walking on a path through the forest, conversing as they journey. The man in the middle, with hand raised, is the Risen Christ, though he is not immediately recognized by his two companions until they break bread around the table in Emmaus.

Although I love that particular account of events on that Easter Sunday morning, my favorite person from the various stories of events surrounding the Resurrection is Mary of Magdala (or Mary Magdalene). As is often the case with some details, the Gospel accounts of the Resurrection that involve Mary Magdalene differ. For example, in the Gospels of Matthew (28: 1-8) and Mark (16: 1-11), we are told that Mary Magdalene visited the tomb with other women, i.e., the “other”

Mary (perhaps Mary, the mother of James) and Salome, and the women arrive at the tomb just after the Resurrection. They encounter an angel who declares that Jesus is risen. The angel then sends the women to the other disciples to share with them the Good News. The Gospel of Mark adds an interesting detail not present in Matthew's version. In Mark 16:9, we read: “When he had risen, early on the first day of the week, he appeared **first** to Mary Magdalene, out of whom he had driven seven demons. She went and told his companions, who were mourning and weeping. When they heard that he was alive and had been seen by her, they did not believe.”

The Gospel of Luke makes no mention of Mary Magdalene (or any other women) visiting the tomb on Easter Sunday morning. In the Gospel of John, Mary Magdalene figures very prominently in the story of Easter Sunday morning. In John 20: 1-10, we read that very early on the first day of the week – “while it was still dark” – Mary Magdalene visited the tomb, alone. When she saw the stone pushed away from the entrance of the tomb, she quickly went to tell Simon Peter and John, the Beloved Disciple. Those two apostles then run to the tomb, to examine it and to verify Mary's story. When we pick up reading John 20:11, it implies that Mary Magdalene returned with Peter and John to the tomb, for after they left, the gospel writer says: “But Mary stayed outside the tomb weeping. And as she wept, she bent over into the tomb and saw two angels in white sitting there, one at the head and one at the feet where the body of Jesus had been.” Immediately after this experience with the two angels, she turns around and Jesus is standing there, though she is not able to recognize him. She presumes that he is the gardener and proceeds to question him regard-

ing where he might have hidden the body of Jesus.

After she finishes her line of questioning, he gently says her name, “Mary.” Immediately, she recognizes him and then Jesus says to her, “Stop holding on to me, for I have not yet ascended to the Father. But go to my brothers and tell them, ‘I am going to my Father and your Father, to my God and your God.’” Mary Magdalene went and announced to the disciples, “I have seen the Lord,” and reported what Jesus told her.

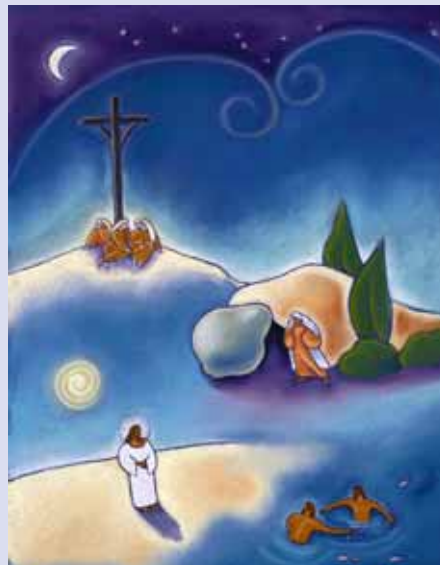
There are some important details of John's version that are worthy of reflection. First, when Mary initially went to the tomb, it was **dark**. In the Gospel of John, there is a constant play between the theme of light and darkness. For John, darkness represents unknowing, unbelief, or even doubt. Mary went to the tomb while it was dark and in her unknowing and doubt, she could not fully grasp what had occurred. She just wasn't quite there yet. However, when she returned, it was daylight. Light represents faith, growth, and new possibilities. Yet, she still does not recognize Jesus when he appears to her. Remember, she thought he was the gardener. This implies that Mary is still progressing in her openness to the awesome reality before her, namely, that her beloved friend, Jesus, had in fact rose from the dead – as the angels announced. As soon as he says her name, she recognizes him. There had to be something in the way he spoke her name that appealed to her heart and opened her eyes of faith immediately and completely.

Thomas Merton, a prophet and master of prayer, describes what happens at this place of darkness: “Love gives an experience, a taste of what we have not seen and are not yet able to see. Faith gives us a full title to this treasure which is ours to possess in the darkness. Love enters the darkness and lays hands upon what is its own!”

It is also interesting to note that once Mary recognized him, Jesus told her to “stop holding on to me.” What did he mean by this statement? It seems rather odd and somewhat harsh. To me, it implies that Jesus is calling Mary to let go of any old ways of living and thinking that might not have been the best. He challenged her to let go of a former lifestyle in order to embrace the new reality of the Resurrection. Because of the special relationship she had with him, Mary was able to let go and now cling to a new vision and a new, healthy way of living. The proof of this is the fact that she ran back to the apostles to not just speak about an empty tomb (the first time she went to them that morning) but now to announce that HE IS TRULY ALIVE! She becomes the very first Apostle of the



Fr. Altavilla



*continued on page 20*

## Branch and Okres News

### REV. DIANISKA DISTRICT

The Reverend Dianiska District's Annual Youth Bowling Party will be held on Saturday July 16, 2011, at Modern Lanes, Exeter, Pennsylvania, from 1:00 to 4:00 p.m. Hope and Lori Napkora are co-chairs.

The youth of the District will attend as guests of the District. Family and friends may also participate in the activities.

Call your Branch Secretary **before July 9** to make reservations. Please include the name, age, and gender each child planning to attend, as well as the number of adult bowlers.

## Board Hears Reports, Selects Counsel

At the Board of Directors Annual Meeting held on Friday, March 25, 2011, at the LPSCU Home Office in Wilkes-Barre, Pennsylvania, the Board heard the Annual Reports of Sam Urda, actuary, of CPS Actuaries; Robert Kopec, certified public accountant; and Ellen Q. Bush, senior vice president and Karen B. Natishan, second vice president, senior investment management consultants of the Bush Natishan Group of MorganStanley SmithBarney, LLC.

Also at the meeting, the Board also approved Jeffrey J. Malak, Esquire, of Wilkes-Barre, Pennsylvania, as counsel for the LPSCU.

At the conclusion of the meeting, the Board hosted a dinner for the LPSCU actuary, CPA, financial advisors, and attorney at the Ramada. Inn.



**Seated, L-R: Anita Gregory, vice president; Mary Jo Savidge, secretary-treasurer; Theresa A. Kluchinski, president; Mary Ann Ewasko, chairperson of trustees; and Cecilia B. Gaughan, fraternal activities director. Standing, L-R: Rev. Philip A. Altavilla, V.E., spiritual advisor; Joan T. Hladek and Dolores M. Evanko, trustees; Ellen Quinlan Bush and Karen B. Natishan, financial advisors; Cheryl Malak; Helen Kopec; Elizabeth Melko, trustee; Attorney Jeffrey J. Malak; Robert Kopec, CPA; and Sam Urda, actuary. Missing from the photo are Margaret Jollimore, trustee, and Margaret A. Ferri, public relations director.**

## Pilgrimage of Faith 2011

SPONSORED BY THE  
SLOVAK CATHOLIC FEDERATION

Saturday, September 10, 2011

Saint Vincent Archabbey, Latrobe, Pennsylvania

### Schedule for the Day

#### 11:00 AM

Arrival of Pilgrims – Welcome by SCF National President Fr. Philip Altavilla and Archabbot Douglas, OSB. Rosary led by representatives of the Conference of Slovak Religious.

#### 12:00 Noon — 1:00 PM

Lunch at Fred Rogers Center – \$10.00 per person. Includes pear half with shredded cheddar and dried cranberries, hand-tossed Caesar salad, chicken Marsala, whipped potatoes with gravy, green bean casserole, pasta Asiago, and raisin bundt cake.

#### 1:00 PM — 3:00 PM

Campus tours available including the following: Saint Vincent Archabbey, Saint Vincent Crypt, Winnie Palmer Nature Reserve, Fred M. Rogers Center, McCarl Coverlet Collection, Saint Vincent Art Gallery, Archabbey Studios.

#### 3:00 PM

Confessions

#### 4:00 PM

Pontifical Mass in the Archabbey Crypt – Most Rev. Joseph V. Adamec, D.D., celebrant and homilist. *This Mass fulfills your Sunday obligation.*

### Deadline for Pilgrims

All those wishing to attend this Pilgrimage of Faith **MUST** contact Dolores Evanko (570-454-5547 or e-mail [ije@intergrafix.net](mailto:ije@intergrafix.net)) **no later than August 22** with the number attending. For those traveling by bus, the bus leader is responsible for notifying Dolores of the number attending.

## National Flag Day is June 14th

We join with the National Flag Day Foundation and the American Fraternal Alliance in celebrating the 234th birthday of the "Stars and Stripes."

We invite you to share your pride with our members across the country and recite the Pledge of Allegiance at 7 p.m. Eastern Time on June 14. Salute the United States – "one Nation, under God, indivisible, with liberty and justice for all."



ZORNICKA

## Letters

Dear Mrs. Theresa A. Kluchinski,

A couple of days ago, I learned who had made my studies at the Accademia Alfonsiana in Rome possible: it was you who gave me the chance to grow both intellectually and spiritually, to study the moral theology and to make a very special and enriching experience of the life of Church in the capital of Christendom.

I do not know you personally and neither you know me; nevertheless, we are one God's family – and He is taking care of us. He has been taking care of me through you and your generosity in the recent years, and so I would like to thank you most sincerely for that. I have been praying and saying Mass every Sunday for those who made it possible for me to study in Rome – for my benefactors. I will continue doing that every following Sunday, remembering you and your beloved ones. Nothing happens “by chance.” Everything we receive is from the hands of our loving Father that cares for His children, and you have become the instrument of His tender care.

I hope you are doing well and enjoy good health. From the distance that divides us but also in the faith that unites us, I am sending now my most devoted blessings and one more big THANK YOU! Hopefully, I will write to you again before long, letting you know that I successfully completed my studies in Rome. For the moment, please receive my warmest and most cordial greetings.

In prayer,

**Father Rado Petrek**

LPSCU Educational Benefits Committee,

Thank you for the members from our Branch 17 who have received scholarship awards. Enclosed is a \$100 donation towards the Scholarship Fund.

Thank you.

**Marion DiCalogero**

Swoyersville, Pennsylvania

## Then and Now

How good are you at predicting the future when you know the past? We're planning a fun new **Convention Contest** to see how good your powers of observation and imagination are. Watch for details!

## Winners Announced for Our 'Caring by Volunteering' Contest

The LPSCU is proud to announce the winners of our recent *Caring by Volunteering* contest. The winners and their prizes are listed below by their respective age categories.

Age 11-15 – iPod	Leah Silay, 13, Br. 64 – 23 volunteer hours
Age 41-60 – \$150.00	Rosemary Wakefield, 59, Br. 159 – 57.5 volunteer hours
<i>Honorable Mention</i>	Donna Silay, 44, Br. 64 – 23 volunteer hours
Age 61+ – \$150.00	Martha Dilley, 83, Br. 75 – 208 volunteer hours
<i>Honorable Mention</i>	John Ferri, 84, Br. 83 – 48 volunteer hours

We did not have any members apply in the Age 5-10, Age 16-24, or Age 25-40 categories. Hopefully, these age categories will be represented should we hold a similar contest in the future.

The LPSCU congratulates all our winners and thanks them for their exemplary volunteer service. We look forward to seeing them join us in our other fraternal activities. Prizes will be sent to the winners from the Secretary-Treasurer.

Fraternally,

The 'Caring by Volunteering' Contest Committee

**Cecilia B. Gaughan**, Chairperson

**Margaret Ferri**

**Margaret Jollimore**

**Joan Hladek**

**Elizabeth Melko**

## LPSCU 2011 POST GRADUATE AWARD \$300 ONE-TIME AWARD

The LPSCU is offering a \$300 Post-Graduate Award Benefit to our members who are awarded a Master's or Doctorate degree during the period from July 1, 2010 to August 30, 2011. Members are only eligible to receive this award one time.

Following are the Guidelines for applying for the Post Graduate Award. All applicants must:

- Be a member of the LPSCU for at least five (5) years with a minimum \$2,000 permanent reserve life insurance certificate (excludes term insurance).
- Provide a photocopy of the Master's or Doctorate degree received.
- Provide documentation that the degree was awarded between July 1, 2010 and August 30, 2011.
- Provide a wallet-size color photo.

Applicants must meet all criteria outlined and provide data indicated to be eligible. Those applications missing data or with incomplete requirements will not be considered. All materials become the property of the LPSCU and will not be returned.

Applications are available from the LPSCU Home Office or its website.

**Applications must be postmarked by August 31, 2011.**

Submit applications to:

Ladies Pennsylvania Slovak Catholic Union

Educational Benefit Committee

P.O. Box 32

Wilkes-Barre, PA 18703

Phone: 570-823-3513 ♦ Toll free: 888-834-6614 ♦ Fax: 579-823-4464

E-mail: [lpescu@lpescu.org](mailto:lpescu@lpescu.org) ♦ Website: [www.lpescu.org](http://www.lpescu.org)



# Ladies Pennsylvania Slovak Catholic Union

## YEAR END REPORT

<b>Assets</b>	<b>Year End 2010</b>	<b>Year End 2009</b>
Investments.....	\$ 13,760,896.00	\$ 13,680,174.00
Certificate of Deposit.....	\$ 192,000.00	\$ 288,000.00
Cash on Deposit.....	\$ 547,110.00	\$ 348,934.00
Mortgage Loans.....	\$ 6,823.00	\$ 18,558.00
Real Estate Owned.....	\$ 124,418.00	\$ 131,189.00
Other Assets.....	\$ 55,506.00	\$ 58,943.00
<b>Totals</b> .....	\$ 14,686,753.00	\$ 14,525,798.00
<b>Liabilities &amp; Fund Balance</b>	<b>Year End 2010</b>	<b>Year End 2009</b>
Fund Balance.....	\$ 3,833,760.00	\$ 3,811,852.00
Interest Maintenance Reserve.....	\$ 268,947.00	\$ 302,541.00
Amt. Retained as Trustee.....	\$ 89,840.00	\$ 88,247.00
Aggregate Reserve-Life Certificates.....	\$ 10,030,942.00	\$ 9,917,474.00
Other Liabilities.....	\$ 463,264.00	\$ 405,684.00
<b>Totals</b> .....	\$ 14,686,753.00	\$ 14,525,798.00
<b>Revenues</b>	<b>Year End 2010</b>	<b>Year End 2009</b>
Premium Income.....	\$ 244,185.00	\$ 172,383.00
Investment Income.....	\$ 767,457.00	\$ 779,202.00
Income - Other.....	\$ 38,952.00	\$ 67,444.00
<b>Totals</b> .....	\$ 1,050,594.00	\$ 1,019,029.00
<b>Expenses</b>	<b>Year End 2010</b>	<b>Year End 2009</b>
Death Claims.....	\$ 288,651.00	\$ 291,155.00
Endowments.....	\$ 37,275.00	\$ 28,402.00
Cash Surrenders.....	\$ 80,786.00	\$ 66,272.00
Dividends.....	\$ -	\$ -
Increase in aggregate reserves.....	\$ 113,468.00	\$ 63,855.00
Commissions (new and renewals).....	\$ 28,529.00	\$ 20,358.00
General Operating Expenses.....	\$ 335,090.06	\$ 373,675.67
Officers and Committee Expenses.....	\$ 34,312.91	\$ 37,343.73
Actuarial/Accounting Expense.....	\$ 66,708.98	\$ 56,395.00
Investment Mgt. Fee.....	\$ 17,636.81	\$ 16,194.82
Official Publications.....	\$ 63,914.94	\$ 67,286.77
Travel Expense.....	\$ 10,135.89	\$ 5,758.89
Bureau and Association Dues.....	\$ 3,360.00	\$ 3,860.00
Donations.....	\$ 5,390.77	\$ 5,095.00
Scholarships.....	\$ 6,900.00	\$ 5,900.00
Fraternal Activities.....	\$ 13,442.64	\$ 14,501.12
Insurance Taxes, Licenses & Fees.....	\$ 33,540.00	\$ 32,470.00
<b>Sub Total</b> .....	\$ 1,139,142.00	\$ 1,088,523.00
Net Gain/Loss From Operations.....	\$ (88,548.00)	\$ (69,494.00)
Net Realized Capital Gain (Loss).....	\$ 18,618.00	\$ (23,020.00)
<b>Total</b> .....	\$ (69,930.00)	\$ (92,514.00)
<b>Surplus Account</b>	<b>Year End 2010</b>	<b>Year End 2009</b>
Surplus, December 31, previous year.....	\$ 3,811,853.00	\$ 3,950,453.00
Net income from operations.....	\$ (69,930.00)	\$ (92,514.00)
Change in net unrealized capital gains(losses).....	\$ 133,234.00	\$ 316,916.00
Change in asset valuation reserve.....	\$ (41,399.00)	\$ (213,002.00)
Aggregate write-ins for gains and losses.....	\$ 2.00	\$ -
Change in reserve on acct. of chg. In valuation basis.....	\$ -	\$ (150,000.00)
Net change in surplus for the year.....	\$ 21,907.00	\$ (138,600.00)
Surplus, December 31, previous year.....	\$ 3,833,760.00	\$ 3,811,853.00

## Member Receives Slovak League Scholarship

Kyle G. Kessler, a member of LPSCU Branch 130, Bethlehem, Pennsylvania, received a \$750 scholarship grant from the Slovak League of America, a civic and cultural federation of Americans of Slovak ancestry. Kyle was one of seven recipients of an SLA scholarships.

The scholarships honor the memory of John and Julia Demko, well-known Slovak fraternal and cultural leaders in Bayonne, New Jersey. The winners were selected based on academic achievement, community activity, as well as an essay submitted on some theme from Slovak culture or history. (The title of Kyle's essay was "Slovak Faith Traditions.") As part of the qualifications, each recipient had to be of Slovak ancestry.

In addition to the grant, each winner received a copy of the 2010 edition of *Slovakia*, a cultural and scholarly annual published by the Slovak League of America. The annual is edited by Dr. M. Mark Stolarik, the chairholder of Slovak History and Culture at the University of Ottawa, Canada.

Kyle is a freshman at the University of Pittsburgh, where he is majoring in physical therapy. A gifted athlete, Kyle has been active in several university sports programs. He was selected to participate in the Rotary Leadership Conference and was selected as the September 2010 Rotary Student of the Month. In December 2010, Kyle was named the World Language and Science Department's Student of the Month. He made the Dean's List for his first semester. Kyle is also active in his parish where he serves as a religious education teacher.

Kyle is the son of Gregory and Patricia Kessler of Myerstown, Pennsylvania. He is the grandson of Mary Shannon of Bethlehem, Pennsylvania, who is president of LPSCU Branch 83/130 and secretary of the Lehigh Valley Okres. The Kessler and Shannon families are 100% members of the LPSCU.

The LPSCU congratulates Kyle Kessler on receiving this scholarship. We wish him continued success as he pursues his degree at Pitt.

## Young Member Performs in Ballet

Marissa Jason, 9, a member of LPSCU Branch 6, Wilkes-Barre, Pennsylvania, recently participated in "The Great Russian Nutcracker" by the Moscow Ballet. The performance was held at the F.M. Kirby Center for the Performing Arts on Sunday, November 14, 2010. The ballet featured the talents of area dancers in supporting roles. Marissa was one of two little Russian dancers.



Marissa is a dance student at the Harris Conservatory for the Arts and has been dancing since age 4. She is the granddaughter of LPSCU Chairperson of Trustees Mary Ann Ewasko.

## Kudos for Our Zornicka...

I have been a member since my aunt encouraged me to purchase an insurance account. At the time, I lived in Pennsylvania, but since have moved to California. One of the highlights of my month is when the *Zornicka* arrives in my mailbox. I have been in California for 21 years now, and have always loved the publication. I have learned much over the years, and have seen my cousin receive a scholarship, people whom I have known as a child pass on, and general info about Slovaks. Someday I would like to take a trip to the area where my grandparents are from, and I believe what I have learned about Slovak culture through *Zornicka* will be invaluable. Thank you.

**Mary Dolores Kracun**  
San Diego, California  
Branch 124, Hazleton, Pennsylvania

## SCRIPTSAVE®

### UTILIZATION REPORT

	For February 2011	Year-to-Date 2011
Prescriptions Filled:	8	29
Normal Retail Pricing:	\$ 259.65	\$ 1,069.23
ScriptSave Pricing:	\$ 142.04	\$ 583.36
Total Dollars Saved		
by LPSCU Cardholders:	\$ 117.51	\$ 485.87
Average Saved per		
Discounted Prescription:	\$ 23.52	\$ 25.57
Overall LPSCU Discounted		
Prescription Savings:	54.29%	49.55%

MAY/JUNE 2011

## Remembering Our Parents with Love

"My mother and father (Hilda and Michael Kresik) showed their love for their family in so many ways. Their years of unselfish love is most memorable. It was always 'their children's needs before their needs.' They are truly missed and remembered with love always."

From their daughter, **Mary Ellen Soltis**  
Pittsburgh Branch 52

"A Mother's love is like a garden that blooms forever in our hearts."

In loving memory of the women  
in the **Matvya, Murajda & Carney Families**

"This is to acknowledge the strong men in our families, past and present. Thank you for your guidance and strength and for setting the path for our younger generations."

**The Matvya, Murajda & Carney Families**  
Swissvale Branch 42

## Cardinal Tomko Chapter Supports Soup Kitchen

On March 6, 2011, LPSCU Fraternal Activities Director Cecilia Gaughan, a member of the Slovak Catholic Federation's Cardinal Tomko Chapter, and LPSCU Public Relations Director Margaret A. Ferri, president of the Chapter, delivered an assortment of non-perishable food to the Ecumenical Soup Kitchen of the Allentown Diocese. The items were donated by members of the Cardinal Tomko Chapter at their Annual Meeting and Christmas Party held this past December.

Due to the short supply of food at the Ecumenical Soup Kitchen, Director Millie Scrak was overjoyed to see the items donated by the Chapter. The Soup Kitchen is located in the social hall of Our Lady of Mount Carmel Church, corner of Chew and Second Streets in Allentown, Pennsylvania.

The non-perishable food drive is an annual event held by the Cardinal Tomko Chapter for the benefit of the Ecumenical Soup Kitchen. Many members of the Cardinal Tomko Chapter also belong to the LPSCU.



**L-R, Cecilia Gaughan, coordinator of the CTC food drive; Millie Scrak, director of the Ecumenical Soup Kitchen; and Margaret A. Ferri, president of the CTC.**

## LPSCU To Honor Its 2011 Graduates

Once again this year, the Ladies Pennsylvania Slovak Catholic Union would like to honor all our 2011 graduates with a photo and message in our magazine. If you know of a member who graduates this year from college, a technical or career school, high school, junior high, elementary school, or kindergarten, we would like to feature them in our September/October issue. **Please note, the honoree's graduation must take place in calendar year 2011.**



Please send us a picture and brief message about the graduate. Messages should not be more than 25-30 words and should include the graduate's name, city and state, and Branch number, as well as the school and grade from which the individual is graduating. If space permits, add a brief congratulatory or informational message about the graduate. For example:

*Robert Jones of Whitehall, Pennsylvania, Branch 38, graduated from Allentown Central Catholic High School in June. We're proud of you, Rob! Love, Mom and Dad*

*Melanie Smith of Taylor, Pennsylvania, Branch 6, graduated cum laude from Boston College with a Bachelor of Science in Critical Care Nursing. Congratulations, Melanie!*

*Thomas Phillips of East St. Louis, Illinois, Branch L0179, has graduated from Kindergarten at St. James Academy. We love you, Tommy! — Grammy & Pop*

Please send your photo and message to Fraternal Activities Director Cecilia B. Gaughan, 325 Florida Avenue, Whitehall, PA 18052. Please include an address and phone number or e-mail address in case we have to get in touch with a question concerning your submission. The LPSCU reserves the right to edit messages that exceed the 25-30 word limit.

Moms and dads, grandparents, aunts and uncles, godparents, siblings, friends and neighbors — we're sure you know an LPSCU/LCA member who's about to graduate this spring. We hope that all our members will take part in this program to honor all our member-graduates.

**The deadline for submitting graduation photos and messages for our September/October issue is July 20, 2011.**

**SIGN UP A NEW MEMBER**

**TODAY!**

## Sarah Ann Brassington is 2011 Youth Achievement Award Winner

The LPSCU is proud to announce that Sarah Ann Brassington of Saugus, Massachusetts, is our 2011 Youth Achievement Award winner. Sarah was nominated for the award by her grandfather, Dominic P. Fino of Dallas, Pennsylvania. She was recommended for the award by Andrea Alberti, campus minister/religion teacher at Saint Mary's High School in Saugus, where Sarah is a senior.



**Sarah Ann Brassington**

Ms. Alberti is Sarah's senior religion teacher for Christian morality and states she has known Sarah since her freshman year through her involvement in campus ministry. Ms. Alberti's letter of recommendation states, "Sarah is a bright, mature, responsible young woman, who lives her faith devoutly and actively. Her maturity and intellect is apparent in class discussion. She has an outstanding grasp of the teachings of the Church and social justice. She is able to articulate concepts and opinions openly and concisely. She is truly a friend to everyone, yet never waivers on her high moral standards, and encourages others to do the same."

The recommendation letter goes on to state that Sarah's desire to live a purposeful life of integrity is obvious by her many hours of volunteer work. She spends much of her time volunteering and serving at her church. She is a Confirmation teacher, a first grade religion teacher, and coordinator for the children's Mass. She loves teaching and serving. The adult parishioners look to Sarah for guidance and vision.

Sarah helped raise \$25,000 through her participation in a 30-Hour Famine/Hunger for Justice Program sponsored by Saint Mary's High School. She gave up food, shelter, and technology for 30 hours in order to help those in need in Haiti. She spent her time feeding the homeless on the streets of Boston, cleaning a local shelter, and praying and drawing closer to God.

After graduating from high school in June, Sarah will be attending Stonehill College in Easton, Massachusetts, majoring in accounting.

Sarah is the daughter of Leann and Richard Brassington, Sr., of Saugus. She has a brother, Richard Brassington, Jr. Sarah, her mother, brother, uncles, and many cousins are all members of LPSCU Branch 6, Wilkes-Barre, Pennsylvania.

The LPSCU congratulates Sarah Ann Brassington, our 2011 Youth Achievement Award winner. We are proud of her achievements and accomplishments in helping youth and adults at her church, and especially the homeless. She is an outstanding young lady and most deserving of the Youth Achievement Award. We wish Sarah continued success in her future endeavors.



# Young Member Supports Our Soldiers in Iraq

Nathan Siegfried, 12, of Bethlehem, Pennsylvania, initiated a care package drive at St. Theresa School in Hellertown, Pennsylvania, to collect snacks, toiletries, toothpaste, toothbrushes, and soap for his uncle's unit stationed in Iraq. The students made homemade cards for the soldiers in the unit as well.

It all started with a service project that Nathan had to do in order to receive the sacrament of Confirmation. He decided that he wanted to do something good that would benefit his uncle, Major David Repyneck, who is a member of the 109th Mobile Public Affairs Detachment Unit in Iraq. The students collected enough items to fill 17 boxes to send to the unit.

The drive coincided with the annual Catholic Schools Week celebration as well and the school received a lot of media coverage from WFMZ Channel 69 News, *The Express-Times*, *The Valley Voice*, and NBC Channel 10 in Philadelphia.

Nathan is a seventh grade student at St. Theresa School and is the son of Nicole Repyneck Malone, who is a member of LPSCU Branch 83. Nathan and his two brothers, Aidan and Evan, are members of LPSCU Branch 130.

Major Repyneck graduated from St. Theresa School in 1982. He attended Saucon Valley High School, graduating in

1986. He went on to receive his Bachelor's and Master's degrees from DeSales University in Center Valley, Pennsylvania. Major Repyneck is the father of two children, Olivia and Jack. He has 24 years of military service, including one tour to Afghanistan in 2003. He is the grandson of the late Susanna Mamay of Bethlehem, who recommended her entire family to be members of the LPSCU.



Major David Repyneck of the 109th Mobile Public Affairs Detachment Unit is shown while on duty in Iraq.

## Calendar of Events

*continued from page 2*

**20** — Deadline to submit a message honoring a 2011 member-graduate. *See page 8.*

### AUGUST

**22** — Deadline to notify SCF Secretary Dolores Evanko if you plan to attend the Pilgrimage of Faith. *See September 10.*

**31** — Deadline to apply for the LPSCU's 2011 Post Graduate Award (*See page 5*) and Religious Awards (*See page 17*).

### SEPTEMBER

**10** — Slovak Catholic Federation Pilgrimage of Faith, Latrobe, Pennsylvania. *See page 4 for details.*

**18** — Rev. Dianiska District Meeting at St. Mary's Church Hall, South Washington Street, Wilkes-Barre, Pennsylvania, beginning at 2:00 p.m. (*Note time change*). Branches 6 and 213 will host.

**20** — **Deadline to submit articles for November/December 2012 Zornicka.**

**23-25** — LPSCU Semiannual Meeting, Pocono Manor, Pennsylvania

**29-10/1** — American Fraternal Alliance (formerly NFCA) Annual Meeting in Denver, Colorado

### NOVEMBER

**20** — **Deadline to submit articles for January/February Zornicka.**

### DECEMBER

**3** — LPSCU Telephone Conference Meeting

**4** — Rev. Dianiska District's annual Christmas party at the Ramada Inn, Public Square, Wilkes-Barre, Pennsylvania, beginning at 1:00 p.m. Branch 19 will host.



Nathan Siegfried (2nd row, at right) with his classmates at St. Theresa School.



Nathan Siegfried, holding a U.S. Flag that flew over his uncle David Repyneck's base in Iraq, is shown with his mother, Nicole Malone, and grandmother, Kathy Repyneck.

# LPSCU Board Conference Call Minutes

December 4, 2010

## Call to Order – Prayer

President Theresa Kluchinski called the meeting to order at 10:15 a.m. and offered a prayer that was prepared by Rev. Philip Altavilla.

## Roll Call

President Kluchinski called upon Secretary-Treasurer Mary Jo Savidge for roll call. Spiritual Advisor Rev. Philip Altavilla was excused. Trustee Elizabeth Melko was experiencing phone problems and was unable to connect to the conference call.

## Welcome Remarks

President Kluchinski welcomed everyone and extended her deepest sympathy to the family of Ann Tirpak, past Trustee, who passed away on November 20, 2010. She also congratulated Mary Ann Siska, 2010 LPSCU Fraternalist of the Year, for being named an NFCA Fraternal MVP (Most Valuable Participant).

## Approval of Agenda/Minutes

The revised Agenda was approved, along with the Minutes from the September 10-13, 2010, meeting, with five changes.

## In Memoriam

*Blessed are they that mourn, for they shall be comforted.* —  
Matthew v.5

Name	Branch	Location
Mary Ann Chopyak	7	Exeter, PA
Margaret Lawrence	19	Swoyersville, PA
Elizabeth O'Neil	21	West Lake, MA
Katherine A. Gombeda	23	Hazleton, PA
Agnesa Inman	32	Pana, IL
Theresa M. Callacki	37	Plymouth, PA
Catherine Pavlick	46	Tamaqua, PA
*David R. Janicko	64	Pittsburgh, PA
Helen Kallay	65	Munhall, PA
*Mary Ann Lutheran	65	Munhall, PA
*Anna Adamcik	83	Bethlehem, PA
Christian W. Pruchnic	90	Johnstown, PA
John J. Hovanec	124	Hazleton, PA
Warren C. Rife, Jr.	124	Hazleton, PA
Margaret Porubski	153	Perth Amboy, NJ
Salome E. Ashmont	153	Perth Amboy, NJ
*Mildred Busavage	156	Coaldale, PA
John Simokaitis	197	Wilkes-Barre, PA
Bruno Jasevicius	197	Wilkes-Barre, PA
John B. Savukinas	197	Wilkes-Barre, PA
Ernestine Foltz	197	Wilkes-Barre, PA
Paul Dobias	197	Wilkes-Barre, PA
Anna Nagorka	197	Wilkes-Barre, PA
Nijole Vaitekunas	197	Wilkes-Barre, PA
Elizabeth A. Biggs	197	Wilkes-Barre, PA
Anna Spodnik	197	Wilkes-Barre, PA
Anna Wexler	197	Wilkes-Barre, PA

\*Multiple certificates

## Correspondence

Secretary-Treasurer Savidge read the correspondence received since the previous meeting and reported there were no requests.

## Financial Report

Board members were provided with and reviewed the following information:

- ❖ Quarterly Statement – September 2010
- ❖ Month End Balance Sheet/Revenue & Expenses Accounts
- ❖ Budget
- ❖ Summary Market Value 2010
- ❖ October 2010 Custodial and Clearbridge Advisors Dividend Strategy
- ❖ Smith Barney Checking Account, Anne (Shinal) Cichy and Bishop Grutka awards, and the First Eagle Fund
- ❖ Employee Retirement Plan
- ❖ Transaction Summary Report

## Home Office Update

Secretary-Treasurer Savidge reported on the following:

- ❖ Building
- ❖ Direct Debit
- ❖ Security System
- ❖ Scanning
- ❖ Postage
- ❖ QuickBooks
- ❖ Website

President Kluchinski gave an update on the NFCA/Home Depot Program.

## Unfinished Business

The Board reviewed and discussed the Matching Funds Program which will begin January 1, 2011.

## New Business

The Board reviewed and approved the Pension Regulatory Changes.

## National/State Congress Meetings

The Board was provided reports on State Fraternal Congress meetings from President Kluchinski, Vice President Anita Gregory, Secretary-Treasurer Savidge, and Chairperson of Trustees Mary Ann Ewasko.

## Committee Reports

The Board was provided with and reviewed the following reports:

- ❖ Fraternalist of the Year
- ❖ Fraternal Activities
- ❖ Campaign Committee

## Calendar of Events

The Board was provided the calendar of events for 2011 and 2012.

President Kluchinski asked if anyone had anything else for the good of the union. There being nothing else, the meeting was adjourned.

Respectfully submitted,

**Mary Jo Savidge**, National Secretary-Treasurer

ZORNICKA



## Illiana District Honors Mary Ann Siska

On December 11, 2010, the Illiana District of the LPSCU honored Mary Ann Siska, LPSCU 2010 Fraternalist of the Year, at a luncheon at Toby's Restaurant in Palos Heights, Illinois. District members and Mary Ann's family were present at the luncheon to honor Mary Ann.

To qualify for this award, Mary Ann exhibited extraordinary acts of fraternalism within her branch (Branch 158 of Chicago, Illinois) and the Illiana District, and performed outstanding volunteer service within her church and community. An article outlining Mary Ann's volunteer and fraternal service appeared in the July-August 2010 issue of *Zornicka*.

The Illiana District is proud of Mary Ann's outstanding service to her Branch, District, church and community, and her many acts of kindness to her neighbors and friends, all of which led to her selection as the 2010 LPSCU Fraternalist of the Year.



**Seated L-R: Mary Lubtezak, Br. 28; Agnes McLaren, Br. 28; Mary Ann Siska, Br. 158; Joan Hladek, Br. 109; Ann Dobias, Br. 194 and 198; Mary Kuric, Br. 109; Joseph Hladek, Br. 109; and Emily Vallese, Br. 79. Standing, L-R: Francis Lubtezak, Br. 28; Patricia Stearney, Br. 109; George Siska, Mallory Siska, and Nancy Siska, all of Br. 158; and Joan Kuric, Lisa Nicholi, and Rene Hladek, all of Br. 109.**



**Mary Ann Siska (center) receives a beautiful bouquet of flowers from Honorary National Trustee Ann Dobias (left) and a plaque from National Trustee Joan Hladek (right), in honor of being named the LPSCU's 2010 Fraternalist of the Year.**

## Celebrating Our SLOVAK CATHOLIC CULTURE



St. Andrew Svorad Abbey is hosting another event in our series: "Celebrating Our Slovak Catholic Culture." The date is Sunday, May 29, with Mass at 1:00 p.m. at St. Andrew Svorad Abbey Church, 2900 Martin Luther King Jr. Blvd., Cleveland, Ohio. A bountiful lunch of favorite Slovak food and baked goods follows immediately.

There will be a presentation on the Marion Shrines of Slovakia. Content will include histories of the shrines and their relevance in the life of the Church and our world today.

Cosponsors of the event are the Slovak Catholic Federation, Cleveland Chapter; St. Andrew Svorad, Branch 24, and St. Joseph, Branch 1 of the First Catholic Slovak Union; The Slovak Institute; Branch 530 of the First Catholic Slovak Ladies Association; Branch 209 of the Ladies Pennsylvania Slovak Catholic Union; and Branch 303 of the Slovak Catholic Sokol.

Cost for the event is \$14.00 per person, payable in advance. Additional information and reservations can be made by contacting the following: Marie Golias (216-228-8179), Susan Lang after 6:00 p.m. (216-896-0957), Joseph Hornack (216-721-5300, ext. 294), or Father Albert Marflak, OSB (216-721-5300, ext. 209). **Deadline for reservations is May 18.**

Please make checks payable to St. Andrew Abbey and send them to Fr. Albert at the above noted address or give to any of the above-mentioned contacts.

## Member Inducted Into National Honor Society

On Thursday, March 17, 2011, Brendan James Tomasic, a member of LPSCU Branch 52, was inducted into the National Honor Society. Brendan is currently a junior at Great Mills High School in southern Maryland. He is the son of Jim and Mary Ann Tomasic of Dameron, Maryland, and the grandson of Carol Ann Staudt Tomasic of Pittsburgh (North Hills), Pennsylvania, and James Harcarik Tomasic, Branch 52 secretary. Brendan's maternal grandparents are Jim and Joan Ruffing of Youngstown, Ohio.



**Brendan Tomasic**

The pledge of NHS members is "to maintain high scholastic standing, to hold as fundamental and worthy an untarnished character, to endeavor intelligently and courageously, to be a leader, and to give myself freely to service to others."

Brendan's family, along with the members of the LPSCU, congratulate him on his most recent achievement and wish him nothing but success in his future endeavors.



# LPSCU 20 Year Endowment Life Insurance Plan

A unique way to generate sizable funds for the purpose of future college education costs for young family members is through our 20 Year Endowment Life Insurance Plan. The payment of a monthly, quarterly, semiannual, or annual endowment life insurance premium for a period of 20 years will help defray higher education tuition and related costs. Planning for college expenses should be implemented as soon as a child is born so that the necessary resources will be available for the child to pursue a college degree. An endowment life insurance certificate can serve many other purposes as well, such as assisting with wedding expenses or towards the purchase of a home, furniture, car, or a vacation.

After 20 years of premium payments, the insured will have the choice of any one of the following three options: (1) Immediate payment of the face value; (2) Immediate payment of a portion of the face value and a paid-up certificate for the face amount of the existing certificate (Option A); or (3) Paid-up certificate for a larger face value (Option B). In the event of the insured's death prior to 20 years, the face amount of

the endowment certificate is payable to the named beneficiary/beneficiaries.

The 20 Year Endowment Life Insurance Plan is offered from age 0 to 70 and premium payments can be made on a monthly, quarterly, semiannual, or annual basis. This plan offers the added fraternal benefits of educational awards, youth and adult activities, newborn benefits, prescription discount plan, official publication, and discount car rental.

Consider the LPSCU's 20 Year Endowment Life Insurance Plan to build up savings for the future, while at the same time protecting the insured with life insurance. To apply for this specific plan, or any other insurance plan offered by the LPSCU, contact your Branch Secretary or the LPSCU Home Office.

Listed below are the Annual and Monthly Premium Schedules for the 20 Year Endowment Life Insurance Plan. The premiums listed are based on \$1,000 of life insurance coverage. Semiannual and quarterly premium rates are also available by contacting your Branch Secretary or the Home Office.

## 20 YEAR ENDOWMENT ANNUAL AND MONTHLY PREMIUM RATES PER \$1,000 Based on 2001 CSO Male and Female Mortality Tables / Based on Age at Last Birthday

Issue Age	Annual		Monthly	
	Male	Female	Male	Female
0	38.15	37.77	3.43	3.40
1	38.34	37.96	3.45	3.42
2	38.53	38.15	3.47	3.43
3	38.72	38.34	3.48	3.45
4	38.92	38.53	3.50	3.47
5	39.11	38.72	3.52	3.48
6	39.30	38.91	3.54	3.50
7	39.49	39.10	3.55	3.52
8	39.69	39.30	3.57	3.54
9	39.90	39.50	3.59	3.56
10	40.10	39.70	3.61	3.57
11	40.30	39.90	3.63	3.59
12	40.50	40.10	3.65	3.61
13	40.70	40.30	3.66	3.63
14	40.91	40.50	3.68	3.65
15	41.11	40.70	3.70	3.66
16	41.31	40.90	3.72	3.68
17	41.51	41.10	3.74	3.70
18	41.72	41.31	3.75	3.72
19	41.94	41.52	3.77	3.74
20	42.15	41.73	3.79	3.76
21	42.36	41.94	3.81	3.77
22	42.57	42.15	3.83	3.79
23	42.78	42.36	3.85	3.81
24	43.00	42.57	3.87	3.83
25	43.21	42.78	3.89	3.85
26	43.42	42.99	3.91	3.87
27	43.63	43.20	3.93	3.89
28	43.85	43.42	3.95	3.91
29	44.08	43.64	3.97	3.93
30	44.30	43.86	3.99	3.95
31	44.52	44.08	4.01	3.97
32	44.74	44.30	4.03	3.99
33	44.97	44.52	4.05	4.01
34	45.19	44.74	4.07	4.03
35	45.41	44.96	4.09	4.05

Issue Age	Annual		Monthly	
	Male	Female	Male	Female
36	45.63	45.18	4.11	4.07
37	45.86	45.41	4.13	4.09
38	46.10	45.64	4.15	4.11
39	46.33	45.87	4.17	4.13
40	46.56	46.10	4.19	4.15
41	46.79	46.33	4.21	4.17
42	47.03	46.56	4.23	4.19
43	47.26	46.79	4.25	4.21
44	47.49	47.02	4.27	4.23
45	47.73	47.26	4.30	4.25
46	47.98	47.50	4.32	4.28
47	48.22	47.74	4.34	4.30
48	48.46	47.98	4.36	4.32
49	48.70	48.22	4.38	4.34
50	48.94	48.46	4.40	4.36
51	49.19	48.70	4.43	4.38
52	49.43	48.94	4.45	4.40
53	49.67	49.18	4.47	4.43
54	49.92	49.43	4.49	4.45
55	50.18	49.68	4.52	4.47
56	50.43	49.93	4.54	4.49
57	50.68	50.18	4.56	4.52
58	50.93	50.43	4.58	4.54
59	51.19	50.68	4.61	4.56
60	51.44	50.93	4.63	4.58
61	51.69	51.18	4.65	4.61
62	51.95	51.44	4.68	4.63
63	52.54	51.70	4.73	4.65
64	54.40	51.96	4.90	4.68
65	56.46	52.22	5.08	4.70
66	58.73	52.48	5.29	4.72
67	61.25	52.74	5.51	4.75
68	64.05	53.81	5.76	4.84
69	67.19	55.76	6.05	5.02
70	70.71	57.95	6.36	5.22

# Minutes of the Executive Finance Committee

## Home Office, Wilkes-Barre, Pennsylvania

### January 26, 2011

President Theresa Kluchinski called the meeting to order and offered a prayer, followed by the Pledge of Allegiance.

Attendees: Theresa Kluchinski, president; Anita Gregory, vice president; Mary Jo Savidge, secretary-treasurer; and Mary Ann Ewasko, chairperson of trustees.

The committee reviewed and accepted the Minutes from the December 15, 2010, Executive Finance Committee meeting.

The committee acknowledged all the correspondence read and approved the following requests:

- ❖ Slovak Catholic Federation is requesting an ad for their 100th Anniversary Commemorative Book. *Approved \$100.00.*
- ❖ Banquet tickets for the Slovak Catholic Federation's 100th Anniversary are \$35.00. The committee approved the LPSCU pay for the cost of the ticket for LPSCU Board members and a guest who would like to attend the banquet.
- ❖ The Home Office did the printing and mailing, at a cost of approximately \$300.00, of information about the Slovak Catholic Federation's 100th Anniversary Celebration. The committee approved the LPSCU paying the cost.

#### Financial Statement

The committee reviewed the following checking accounts as of December 31, 2010: M&T Bank – General Operating Account, M&T Bank – Home Office Checking Account, and Smith Barney Checking Account.

#### Bond/Stock/Pension Portfolio

The committee was provided copies of all reports from December 31, 2010, reviewing all activity, including CDs, Common Stocks, Preferred Stocks, Bonds, and International Investments. The Employee Retirement Plan was also reviewed.

Since we are no longer using the Pitney Bowes postage machine, the committee approved returning of the machine at a cost of \$482.08.

The committee was given information and discussed the following: Employment Practice Liability Insurance, replacing the piping in the back room, QuickBooks, and Branch Officer Information forms that have not been completed.

There being no further business, the EFC adjourned.

Respectfully submitted,

**Mary Jo Savidge**

National Secretary-Treasurer

### March 16, 2011

President Theresa Kluchinski called the meeting to order and offered a prayer, followed by the Pledge of Allegiance.

Attendees: Theresa Kluchinski, president; Anita Gregory, vice president; Mary Jo Savidge, secretary-treasurer; and Mary Ann Ewasko, chairperson of trustees. The committee reviewed and accepted the Minutes from the January 26, 2011, Executive

Finance Committee meeting. *(No meeting was held in February.)*

The committee acknowledged all the correspondence read and approved the following requests:

- ❖ Polish National Union of America requesting an ad in the program book for the 29th General Convention. *Approved full page ad at \$100.00.*
- ❖ Fraternal Societies of Greater Pittsburgh requesting the purchase of an ad and banquet tickets for the Fraternalist of the Year celebration. *Approved half page ad at \$75.00 and 2 tickets to the banquet at \$55.00 apiece.*
- ❖ Benedictine High School requesting an ad in the program book for the 2011 Blue and White Gala. *Approved business card size ad at \$150.00.*

#### Financial Statement

The committee reviewed the following checking accounts as of January 31, 2011: M&T Bank – General Operating Account, M&T Bank – Home Office Checking Account, and Smith Barney Checking Account.

#### Bond/Stock/Pension Portfolio

The committee was provided copies of all reports from January 31, 2011, reviewing all activity, including CDs, Common Stocks, Preferred Stocks, Bonds, and International Investments. The Employee Retirement Plan was also reviewed.

#### Budget

The committee was provided and reviewed the budget for 2011.

#### Meeting Dates

The committee set meeting dates for the remainder of 2011.

There being no further business, the EFC adjourned.

Respectfully submitted,

**Mary Jo Savidge**

National Secretary-Treasurer

## Pittsburgh Folk Festival Set

Pittsburgh's annual Folk Festival will be held on May 13-15, 2011, at the Monroeville Convention Center. The festival will feature continuous ethnic music and dance, with more than 20 nationalities featured. And, in addition to cooking demonstrations, there will be a diverse menu of international dishes for sale. Also featured is a crafts workshop, as well as vendors selling items from many countries.

Admission tickets are \$8.00 in advance. Children under 12 will be admitted free. To purchase advance tickets, make checks payable to the Pittsburgh Slovaks and mail to 234 Ilion Street, Pittsburgh, PA 15207. Tickets will also be available at the door for \$10.00.

# PROCLAMATION

NATIONAL FLAG DAY – TUESDAY, JUNE 14, 2011

## Annual Pause for the Pledge of Allegiance to the U.S. Flag



WHEREAS, by Act of Congress of the United States dated June 14, 1977, the first official flag of the United States was adopted, and

WHEREAS, by Act of Congress dated August 3, 1949, June 14 of each year has been designated National Flag Day, and

WHEREAS, on December 8, 1982, the National Flag Day Foundation was chartered to conduct educational programs and to encourage all Americans to Pause for the Pledge of Allegiance on National Flag Day, June 14, and

WHEREAS, by Act of Congress, Public Law 99-54 was passed to have the Pause for the Pledge of Allegiance as part of the celebration of National Flag Day throughout the nation, and,

WHEREAS, National Flag Day celebrates our nation's symbol of unity, a democracy in a republic, and stands for our country's devotion to freedom, to the rule of law, and to equal rights for all,

NOW, THEREFORE, I, Theresa A. Kluchinski, National President, do hereby proclaim June 14, 2011, as National Flag Day and urge all members of the Ladies Pennsylvania Slovak Catholic Union to pause at 7 p.m. Eastern Time on this date for the 32nd annual Pause for the Pledge of Allegiance to the United States Flag and our great nation.

## Illinois Fraternal Congress Honors Mary Ann Siska

Mary Ann Siska, 2010 LPSCU Fraternalist of the Year, was honored at the Annual Meeting of the Illinois Fraternal Congress held on March 3, 2011, in Springfield, Illinois. The IFC selects one Fraternalist of the Year from each representative fraternal organization and honors each at its Annual Meeting. The LPSCU is a member of the Illinois Fraternal Congress. With Mary Ann, of Chicago, Illinois, being our 2010 Fraternalist of the Year, the IFC elected to honor her, along with Fraternalists of the Year from other fraternal organizations that are members of the IFC.

Unfortunately, Mary Ann was unable to attend the IFC Annual Meeting. In her place, LPSCU National Trustee Joan Hladek, who is past president of the IFC, addressed the assembly with regard to Mary Ann's volunteerism and good deeds that qualified her as our Fraternalist of the Year. Joan also mentioned Maryann's being named a Fraternal MVP (Most Valuable Participant) in October of last year by the National Fraternal Congress of America (whose name has recently been changed to Fraternal American Alliance).

The IFC will be mailing a certificate to Mary Ann in honor of her Fraternalist of the Year achievement.

Congratulations again, Mary Ann, for another honor bestowed upon you.

## LPSCU 2011 Catholic High School Award

### \$150 One-Time Award

The LPSCU is offering a Catholic High School Award benefit, which is a \$150 one-time award to our members who are attending a Catholic high school during the 2011-2012 academic year. Members may only receive this award one time.

The following are the guidelines for applying for the Catholic High School Award:

- Must be a member of the LPSCU for two (2) years with \$2,000 permanent reserve life insurance certificate (excludes term insurance).
- Must be a Catholic high school freshman, sophomore, junior, or senior.
- Must provide a wallet-size color photo.

Applicants must meet all criteria and provide data indicated above to be eligible. Incomplete applications or those missing data requirements will not be considered. All materials become the property of the LPSCU and will not be returned. **Applications must be postmarked by June 30, 2011.**

Applications are available from the LPSCU Home Office or its website.

Ladies Pennsylvania Slovak Catholic Union  
Educational Benefit Committee  
P.O. Box 32

Wilkes-Barre, PA 18703

Phone: 570-823-3513 ♦ Toll free: 888-834-6614 ♦ Fax: 579-823-4464

E-mail: [lpscu@lpscu.org](mailto:lpscu@lpscu.org) ♦ Website: [www.lpscu.org](http://www.lpscu.org)

## INSURANCE POLICY CHECKLIST

- ✓ **Beneficiary:**  
*Is my named beneficiary living?*
- ✓ **Address:**  
*Is my current address on file with the Home Office?*



It is **very important** that this information be correct and up-to-date. Please contact the Home Office or your Branch Secretary concerning these matters.



## Patricia Kienzle, Family Members Volunteer for Charitable Benefit

On February 10, 2011, Patricia Kienzle and her daughter, Victoriana, mother-in-law Terri, sister-in-law Cynthia, and niece Abigail, all of Malvern, Pennsylvania, modeled in a fashion show at Wagsworth Manor Pet Resort located in Malvern. The show was held as a benefit to raise money for BreastCancer.org. Patricia's other daughter, Jenna Kienzle, also volunteered for this fundraiser. Jenna was in charge of preparing the rescue dogs to meet the models. Fashions were presented by Christa's Classics of Wayne, Pennsylvania, and Polka Dots of Paoli, Pennsylvania.

The benefit started at 6:00 p.m. with approximately 200 guests enjoying catered food and beverages, and shopping for clothing and miscellaneous items displayed by 18 vendors who donated a portion of their proceeds to the breast cancer organization. The fashion show, which started at 7:30 p.m., was unique in that each model walked on the runway accompanied by a rescue dog on a leash. Many of the dogs were dressed in canine outfits to match the models' fashions. When the fashion show concluded an hour later, guests had an opportunity to meet the rescue dogs and adopt them. This charitable benefit raised over \$7,000 for BreastCancer.org.

Patricia Kienzle and her husband, Dr. Rand Kienzle, and their children, Victoriana, Jenna, Jace, and Tate, are all members of LPSCU Branch 83 and 130. Cynthia Kienzle was proud to note that she is of Slovak heritage as her 95-year-old maternal grandfather, who lives in Florida, is Slovak.



L-R: Cynthia, Victoriana, Terri, Patricia, and Abigail Kienzle.

## LPSCU Annuities

Br.	Branch Representative	Month(s) Jan./Feb. 2010	Year-To-Date Total
122	Theresa Kluchinski	\$3,292.59	\$3,292.59

MAY/JUNE 2011

## ATTENTION: LEHIGH VALLEY OKRES JUNIOR MEMBERS

The Lehigh Valley Okres will host a day at an IronPigs Baseball game at Coca-Cola Park in Allentown, Pennsylvania, for our Junior members. The game will be played against the Rochester Red Wings on Sunday, July 3, 2011, starting at 6:35 p.m. There will be fireworks following the game.

The Lehigh Valley Okres will subsidize the \$9.00 entrance ticket for Junior members, who must be accompanied by an adult. Adult tickets for our group cost \$9.00 each, which includes a \$2.00 ticket toward the purchase of food.

**Reservation deadline for tickets is May 31.** Call Marge Ferri at 610-866-8945 or Ceil Gaughan at 610-433-4610 for information and/or to make reservations.

## New Insurance Issued

Branch	Branch Representative	Jan-Feb 2011	Year-to-Date Total
38	Cecilia B. Gaughan	\$ 30,000.00	\$ 30,000.00
19	Deborah Adamchak	\$ 10,000.00	\$ 10,000.00
52	James Tomasic	\$ 7,000.00	\$ 7,000.00
7	Maureen Grohowski	\$ 5,000.00	\$ 5,000.00
42	Dolores Sakal	\$ 5,000.00	\$ 5,000.00
76	Celeste Palscey	\$ 5,000.00	\$ 5,000.00
83	Mary Ann Ackerman	\$ 1,000.00	\$ 1,000.00
		\$ 63,000.00	\$ 63,000.00

### Fraternal Societies of Northeastern Pennsylvania

## FLAG DAY AT THE BALL PARK

Monday, June 6, 2011

Game Time 7:00 p.m.  
Wilkes-Barre/Scranton Yankees



### PRICE

Members - \$15.00 per person  
Non-members - \$25.00 per person

### Includes:

Dinner on the covered deck in left field!

Watch as one member throws out the first pitch!

All the camaraderie you can get!

Please make reservations by Friday, May 27, 2011

Call 570-823-3513 or 888-834-6614 and ask for Theresa or Mary Jo



**RESERVATIONS MUST BE PAID FOR BY MAY 27, 2011**

Make checks payable to LPSCU.

## LPSCU Members Attend Sokol Assembly's Centennial

On December 5, 2010, Slovak Catholic Sokol Assembly 78 of Bethlehem, Pennsylvania, celebrated its 100th Anniversary with a 10:30 a.m. Mass of Thanksgiving at Incarnation of Our Lord Church in Bethlehem. Principal celebrant was Msgr. Michael J. Chaback, chaplain of Assembly 78. Rev. Stanley M. Moczydlowski, administrator of the church, was co-celebrant.

Following the Liturgy, a banquet was held in the main ballroom of the Best Western Lehigh Valley Conference Center. A cocktail hour preceded the dinner, which was attended by approximately 200 people.

At the banquet, Assembly 78 President George Kostelnik welcomed all to this milestone celebration. Msgr. Chaback gave the Invocation and President Kostelnik offered a toast for the continued success of Assembly 78. Following the delicious meal, President Kostelnik introduced the officers of the Assembly and those of the various fraternal organizations present. He recapped the history of Assembly 78 and praised its founders.

Local LPSCU members were proud to join in the anniversary celebration. Those in attendance were Honorary Vice President Mary Ann Ackerman, Public Relations Director Margaret A. Ferri and her husband John, Branch 83/130 President Mary Shannon, Justine Wesnak of Branch 38, Marie, Joseph, and Milissa Bolcar of Branch 83, Tanya and Richard Korpics of Branch 83 and their children, Jozef and Ivan Korpics of Branch 130, and Jean Kosalko, past president and past vice president, and president and secretary of Branch 196, Hellertown.

As a remembrance of the evening, everyone received a handmade wooden ornament depicting the Christmas manger scene.



LPSCU members who attended SCS Assembly 78's centennial anniversary celebration include, clockwise from bottom left, Margaret A. Ferri, Justine Wesnak, Mary Shannon, and Mary Ann Ackerman.

## Bishop Andrew G. Grutka Memorial Scholarship Award \$1,000 Award

(Maximum of \$2,000 per member)

The LPSCU is proud to offer the Bishop Andrew G. Grutka Memorial Scholarship Award for lay persons between the ages of 18 and 35. This award, implemented at the 37th National Convention held in Merrillville, Indiana, in August 2000, is given in memory of Bishop Andrew G. Grutka, an outstanding Slovak leader who was the founding bishop of the Diocese of Gary, Indiana.

Those applying for the Bishop Andrew G. Grutka Memorial Scholarship Award must meet the following criteria:

- Be a member of the LPSCU for two (2) years with \$5,000 permanent reserve life insurance certificate (excludes term insurance).
- Be a lay person between 18-35 years of age.
- Be of the Catholic religion (Latin Rite or Byzantine).
- Be initiated fully into the Church (Baptized, Eucharist, and Confirmed) and continuing to be eligible to receive the sacraments of the Church.
- Be a member of a Catholic parish.
- Be active in parish/diocesan/campus ministry as a lector, extraordinary minister of Holy Communion, adult altar server, catechist/aide, member of parish RCIA/C Team, youth minister, member of the Parish Pastoral Council, Finance Council, and/or other parish committees or organizations.
- Be active in an organization or activity that promotes awareness of our Slovak heritage, culture, and traditions.
- Be endorsed by their pastor and LPSCU Branch Secretary, with additional endorsement provided by campus minister, youth minister, or pastoral associate.
- Attend (or will attend) an accredited college/university as a full time student.
- Provide a notice of acceptance or tuition receipt for the coming scholastic year.
- Provide a wallet-size color photo.

Applicants must meet all criteria and provide data indicated above to be eligible. Incomplete applications or those missing data requirements will not be considered. All materials become the property of the LPSCU and will not be returned. **Applications must be postmarked by June 30, 2011.**

Applications are available from the LPSCU Home Office or its website.

Ladies Pennsylvania Slovak Catholic Union  
Educational Benefit Committee  
P.O. Box 32

Wilkes-Barre, PA 18703

Phone: 570-823-3513 ♦ Toll free: 888-834-6614

Fax: 570-823-4464

E-mail: [lpscu@lpscu.org](mailto:lpscu@lpscu.org) ♦ Website: [www.lpscu.org](http://www.lpscu.org)

# Slovak Heritage Society Holds Lenten Hymn Sing

Traditional Slovak Stations of the Cross – *Krizova Cesta* – and a heart-warming Slovak Lenten Hymn Sing was held by the Slovak Heritage Society of Northeastern Pennsylvania on the first Sunday of Lent at St. Mary's of the Immaculate Conception Church, Wilkes-Barre, Pennsylvania. Seventy-five individuals attended the event, representing a wide age range of people from various churches throughout the area.

Rev. John Albosta, Slovak Heritage

Society chaplain, presided at the Krizova Cesta and Benediction. Joseph Kowatch served as cross bearer, and Anna Hudock and Elaine Palischak were candle bearers.

Before each of the 14 stations, the traditional hymn "Krest'ania Sem Pospiechajte" was sung by all in attendance. Prayers were led by the following: Magdalen Benish, Jozef and Anna Biros, Tom Check, Mary Chupka, Mary Migalski, Tony Palischak, Helen Savinski,

and Philip R. Tuhy, SHS chairperson. Also participating was Peter Kmec, a young man from Slovakia who is studying at Holy Redeemer High School in Wilkes-Barre.

Bernadette Yench led the congregation in singing the six Lenten hymns. She said, "The hymn sing affords the opportunity for our English speaking faithful to appreciate the wealth of Slovak hymnology." An English translation of all the Slovak hymns was provided, along with the station booklets. Ms. Yench remembered with praise the translations of the hymns with loving respect by society founder, the late Trude Check-Tuhy.

Carl Yanowski was the organist. Magdalen Benish, who coordinated the service, expressed fond memories of learning the Slovak hymns from her mother in early childhood, stressing the words as moving and penetrating, all learned with love and respect.

A translation of one of the hymns follows: *O Srdce Kamenne* – "O heart of stone, pause and reflect with shame. Look on the suffering Christ, head bowed in pain. The time of grief and woe is now at hand, ah; cease your wickedness, your sinful way. Christ is tortured, oh so cruelly, on the cross of wood, slain so brutally."

Also sung were *O Clovece prec mna tak suz ujes?* (Oh, people why do you torment me so?); *Krestania Nariekajte*; *Moj Mily Jezius*; *Ach, Kriz Svaty*; and *Matka Place, Ruky Spina*.

A fellowship was held after the service. Anna Biros made kolacky and nut and poppyseed rolls were served.

Chairperson Tuhy stated that the Slovak Heritage Society of Northeastern Pennsylvania hopes to perpetuate the time-honored Slovak saying: "Kde je Slovak tam je spev" (Where there is a Slovak, there is song).

The Society has cassettes or CDs of the Lenten Hymn-Sing and Passion-Resurrection. Interested persons should check the Society's web page (<http://shsnepa.org>) or write to SHSNEPA, P.O. Box 5004 Station A, Wilkes-Barre, PA 18710-5004.

## LPSCU 2011 RELIGIOUS AWARDS

(FOR APPLICANTS ENTERING RELIGIOUS LIFE)

☞ St. John Vianney Award

☞ St. Theresa of the Little Flower

☞ St. André Bessette, C.S.C.

\$300 ANNUALLY

The LPSCU is offering three separate Religious Awards for members entering Religious Life. They are:

☞ The **St. John Vianney Award** is offered to any male member of the LPSCU aspiring to the priesthood. The member may apply for the \$300 award upon entrance into an approved program of priestly formation. The award may be renewed for each successive year until ordination, provided the member re-applies for said award.

☞ The **St. Theresa of the Little Flower Award** is offered to any female member of the LPSCU aspiring to religious life. The member may apply for the \$300 award upon completion of her first year of Novitiate. The award may be renewed annually until the member is professed as a religious nun, provided she re-applies for said award.

☞ The **St. André Bessette Award** is offered to a male member of the LPSCU aspiring to religious life as a Brother in a religious congregation. He may apply for the \$300 award upon entrance into an approved program for Religious Brother formation. The award may be renewed for each successive year until completion of the program, provided the member re-applies for said award.

Following are the Guidelines for applying for each of the Religious Awards. All applicants must:

- Be a member of the LPSCU for two (2) years with a minimum \$2,000 permanent reserve life insurance certificate (excludes term insurance).
- Provide a wallet-size color photo with the application.
- Re-apply each year while attending/completing studies for Religious Life (in order to receive the award each year of his/her religious training).

Applicants must meet all criteria outlined and provide data indicated to be eligible. Incomplete applications or those missing data requirements will not be considered. All materials become the property of the LPSCU and will not be returned.

Applications are available from the LPSCU Home Office or its website.

**Applications must be postmarked by August 31, 2011.**

Submit applications to:

Ladies Pennsylvania Slovak Catholic Union  
Educational Benefit Committee

P.O. Box 32 ♦ Wilkes-Barre, PA 18703

Phone: 570-823-3513 ♦ Toll free: 888-834-6614 ♦ Fax: 579-823-4464

E-mail: [lpscu@lpscu.org](mailto:lpscu@lpscu.org) ♦ Website: [www.lpscu.org](http://www.lpscu.org)



## Dear Junior Members,

Can you guess what the world's most popular sport is? Here are some hints: It's a team sport with 11 players per team. It is played on a field. Players are continually running. Players cannot use their hands to move the ball while it is in play. Points are scored by kicking a ball into a netted goal.

If you guessed soccer, you are correct.

Not too many years ago in the United States, only a handful of people knew about soccer and even fewer had actually played the game. But in most other countries in the world, soccer has long been a favorite sport, played by adults and children alike and supported enthusiastically by thousands and thousands of fans. But as TV channels began to include soccer in their regular sports programming, more and more Americans began to recognize and appreciate the game for the international phenomenon it is.

It's a game that can be played almost anywhere, and it requires very little equipment, the most important of which is a soccer ball. And it's a game that can be played by girls as well as boys.

Soccer is a fun game to play because there is always something happening. Some compare it to basketball because it moves so fast. You have to be tough to play soccer. You learn to think fast and react quickly to get control of the ball.

In most countries outside the U.S., soccer is known as "football," but it is nothing like the game of football we play here. In fact, soccer is very different from all other sports played with a ball, because players are not allowed to use their hands or arms to move the ball. A soccer player uses both his head and his feet to keep the ball moving. Most of the time players move the ball with their feet by dribbling and kicking it up and down the field. Dribbling is when a player will give the ball little taps with his feet so the ball stays very close to him as it moves. This makes it harder for the opponent to get possession of the ball. Sometimes the ball goes airborne by a hard kick. Then a player can hit the ball in the air with his forehead, changing its direction and making it go where he wants. This is called a "header." Players may also use their chest or thigh to direct the ball – any body part except the hands and arms is allowed.

Soccer is played on a field about the size of a football field. The game begins as the two teams line up, facing each other at the center line of the field. Each team will try to score by kicking the ball into the opposing team's goal at the opposite end of the field. One player on each team is the goalkeeper or goalie. He plays very close to his team's goal to protect it and keep the opponents from scoring. The goalie is the only player on the team who is allowed to touch the ball with his hands. He can use any means necessary, including catching the ball in mid-air, to keep the ball from entering the goal. That is why you often see goalie's wearing gloves, to help them hold onto the ball. A good goalie is alert, quick thinking, and able to move fast in any direction.

Players on school and professional soccer teams wear



simple uniforms which let them move freely. Typically the uniforms consist of shirts, shorts, and knee socks in team colors, with the goalie always wearing the opposite color of shirt than his teammates. Since ankles and legs are likely to get kicked by mistake at times, many soccer players choose to wear shin guards over their socks for protection. Shoes with metal cleats are not allowed. Special soccer shoes have hard rubber cleats.

You have certainly all heard of the "Super Bowl" where, once a year, the top two football teams in America face off to win a huge trophy and bragging rights until the next football season. Soccer has a similar play-off contest, but on an international scale. It's called the Football World Cup or Soccer World Cup (or simply the World Cup), because teams from all over the globe compete to determine the world's best. The World Cup is held only every four years and it is a great honor for a country to be chosen to host the games. Teams must qualify for the tournament over the preceding three years leading up to the Cup year. Finally, the top 32 teams, including that of the host nation, play in an elimination-style tournament that takes the better part of a month to complete. The winning team claims the World Cup for the next four years. Currently Spain holds the Cup, having won it at the 2010 tournament. As popular as the "Super Bowl" is in our country, the World Cup is the most watched sporting event in the entire world. Some 716.1 million people watched the final match of the 2006 World Cup held in Germany. Brazil will host the next World Cup in 2014.

If you think soccer sounds like a sport you may want to try, join an organized team near you. Once you start playing, it won't take long for you to see why soccer is such a popular sport the whole world over.

**Cecilia B. Gaughan**, Fraternal Activities Director

## Bicycle Trivia

Since May is National Bike Month, we thought we'd share some bicycle trivia with you.

By the 1890s, one million American women owned and rode bicycles. Susan B. Anthony, an early pioneer of women's rights, said that bicycles did more to free women than anything else. Bicycles helped women get out of the house and into the community.

Automobile pioneer Henry Ford and aviators Wilbur and Orville Wright started out as bicycle mechanics.

The world's tallest unicycle (one-wheeled bike) stands almost 102 feet tall. With the help of a safety wire suspended from an overhead crane, rider Steve McPeak pedaled it 376 feet.

The longest bicycle can handle 35 riders. It is 67 feet long and weighs about as much as a small car.

You would be in "peddler's paradise" in China, which is called the "Kingdom of Bicycles." China has more bicycles than any other nation. Bicycles outnumber cars by at least 10 to 1.



## The Merry Month of May

Spring may begin in March according to the calendar, but for centuries, people have associated the real return of spring with May. May has us dancing around a Maypole, making flower wreaths and dropping off those homemade baskets filled with May flowers. The May basket is an old-fashioned custom originating with the early Romans who honored Flora, the goddess of spring, by presenting her with flowers at their spring festival. Is there a special loved one or



neighbor you'd like to surprise with a May basket? Remember, you hang it on their doorknob, ring the doorbell, and then hide. (But take a peek to see the delighted expression on their face when they see what you've left!)

May is the month to transplant all your seedlings. First, check to make sure it is past the average freeze date where you live. And, before transplanting, check your water supply by placing an empty tuna can to collect rainwater. Check the can after a week so you are sure your transplants will be getting the required inch of water each week. If they're not, you may have to supplement with a watering can or hose.

May is National Bike Month – Get that bike out, pump up the tires, and go take a ride. And don't forget your helmet!

May 1-7 is Be Kind to Animals Week – Of course we all know that we should always be kind to animals, but even if you don't have a pet, you can mark this special week by volunteering to help out or by collecting food, toys, cat litter, etc., and donating it to a local shelter, or by volunteering to take a neighbor's pet for a walk.

May is National Senior Health and Fitness Month. Spend a special morning or afternoon with your grandparents or a senior citizen. Take them for a swim or bike ride, go bowling, or just take a walk in the park. It will help keep them fit and help you also.

May is also National Backyard Games Month. Badminton, croquet, Frisbee, or horseshoes, anyone? Time to get all those warm weather games out of storage and round up the family and neighbors for some friendly competition.

## Slovak Lesson

### RODINA — THE FAMILY

To je môj bratanec.  
*That is my nephew.*

My sme vnukovia.  
*We are grandsons.*

Kde je tvoj strýko?  
*Where is your uncle?*

Ona je moja bratanica.  
*She is my niece.*

Vy ste vnučky.  
*You are granddaughters.*

Ty máš päť sestier.  
*You have five sisters.*

My sme vnúčatá.  
*We are grandchildren.*

Ty si jeho sestrenec.  
*You are his nephew.*

Reprinted with permission from *LET'S LEARN SLOVAK II*, Hrobak Family Publications, Little Ferry, NJ 07643.

## Kids in the Kitchen

### STRAWBERRY YOGURT SMOOTHIES

½ pint of strawberries (or blueberries)

1 banana

2 8-ounce containers nonfat strawberry yogurt

1 cup low fat milk

Wash and hull the strawberries. Peel the banana and slice it in half or in quarters. Place all the fruit in an electric blender. (Please be sure an adult is present when you use the blender.) Spoon the yogurt into the blender, then pour in the milk. Make sure the lid is secured, then press the puree button and blend until smooth. Pour the smoothie into four 8-ounce glasses. Garnish with a fruit kabob on a skewer (a banana slice with a strawberry on it). Add a colorful straw for a lovely presentation.

✂ CLIP AND SAVE

## America's "First Dogs"

Many of you have heard or read about "Bo," the Portuguese Water Dog that is the pet of President Obama and his family at the White House. But how much do you know about the other famous canines that have occupied this residence over the years? Here are some of the facts:

"Millie" belonged to President George H. and Barbara Bush. She is the only pet to "write" a bestselling book (with the help of First Lady Barbara Bush). Millie's celebrity-packed memoir was so popular that it outsold President Bush's autobiography. It included the Springer spaniel's exhausting White House schedule.

"Yuki" belonged to President Lyndon Johnson. He started out as a stray but after being rescued, quickly adapted to his role as "First Dog." Yuki attended meetings with President Johnson but he was perhaps best known for his performing skills. White House visitors were often entertained by duets performed by Yuki and the President. Yuki would sit on the President's lap and together they would howl out a few tunes. At Christmastime, Yuki would wear a Santa Claus outfit to greet all the visitors.

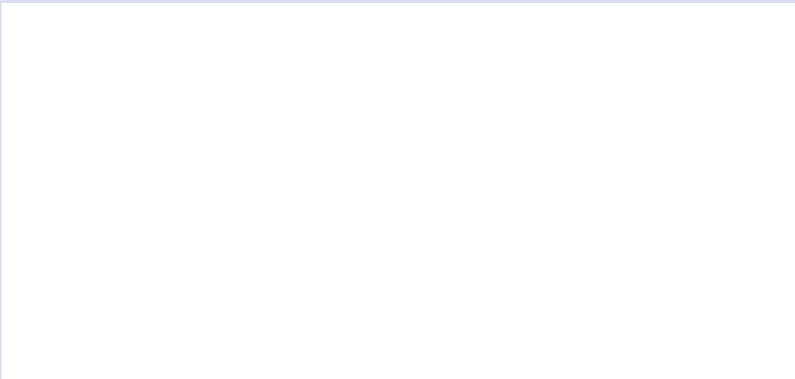
"Fala" was a Scottish terrier, the beloved dog of President Franklin D. Roosevelt.

FDR taught his dog how to charm a crowd. Whenever the "Star-Spangled Banner" played, Fala would stand at attention on his hind legs. He

was a great host and always held out his paw to shake hands with important guests. Fala's White House antics were often covered in the media. He outlived Roosevelt by seven years and was buried alongside his master.

"Laddie Boy" was President Warren G. Harding's Airedale terrier. He attended top-secret briefings, greeted state representatives, and had his own hand-carved chair to sit on at cabinet meetings.





## Witnesses and Apostles

*continued from page 3*

Resurrection. The Good News was entrusted to her and she did not keep it selfishly to herself, but she boldly proclaimed it to those who were stuck in their grief, despair, and doubt.

As we journey through this joyous season of Easter, we, too, are called to be like Mary Magdalene (and so many others who have come before us), to be both witnesses and apostles of the Resurrection. To be a witness means that we, personally, accept the news that Jesus truly is Risen. Even though we may have our periods of being “in the dark,” and may need to let go of “old” ways of thinking and living, we are invited to open our hearts more to the Risen Christ. Once we have allowed that new life of Easter to transform and fill us, then we become apostles – ones sent to share the Good News of God’s love with others. Like Mary, we can confidently say, “I have seen the Lord!” and then we share what we have experienced to those who so badly need to hear a message of hope, forgiveness, and peace.

Lord, the Resurrection of Your Son has given us new life and renewed hope. Help us to live as new people, called to be both witness and apostles of the Resurrection. May we never selfishly cling to love, but be generous in sharing love with others at Easter and always! Christ is Risen! He is truly Risen! HAPPY EASTER!

Nech Vás Boh požehná počas Vel’kej noci a ochraňuje celý rok. Nech Vám dá Boh dostatok viery, aby sa Vám splnili Vaše sny. Nech jeho láska a múdrosť vás vždy sprevádzajú na Vašej ceste. Nech jeho svetlo Vám svieti a požehná Vašu Vel’kú noc. Veselú Vel’kú noc! Kristus vstal zmŕtvych! Naozaj vstal zmŕtvych!

**Fr. Philip A. Altavilla, V.E.**

## Share Your Happy Memories

May and June are months known for graduations and weddings. If any of these happy events are taking place for any of our members, we hope you’ll share them with our readers by sending information and, if available, photos to Public Relations Director Margaret A. Ferri, 428 East Frankford Street, Bethlehem, PA 18018 (or email: margferri28@gmail.com).

March 3, 2011

Ladies Pennsylvania  
Slovak Catholic Union  
71 South Washington Street  
Wilkes-Barre, PA 18701

# CPS Actuaries

Ladies:

This will certify that we have completed a valuation of the outstanding certificates of the Society as of December 31, 2010, according to the schedules of insurance submitted to us, and have found the reserves to be as follows:

01 CSO 4% .....	\$ 58,903
41 SI 3% .....	105,213
80 CET 4% .....	277
80 CET 4.5% .....	47,575
80 CSO 4% .....	236,230
80 CSO 4.5% .....	2,343,172
80 CSO 5% .....	2,187,510
80 CSO 5.5% .....	763,788
AE 3% .....	524,517
AM 3% .....	3,496,778
Annuities .....	83,072
Unearned Premium Reserve .....	22,617
For AIDS Risk .....	6,800
Deficient Premiums Reserve .....	3,957
Reserve for A&H Riders .....	533
Asset Adequacy Analysis .....	150,000
Total Life Reserve .....	\$10,030,942
Reserve for Accident & Health Certificates .....	—
Total Reserve .....	\$10,030,942

The Society’s valuation indicates that on the bases specified above, the future assessments of the Society at the net rates then being collected, together with the admitted assets as they appeared in the Society’s 2010 annual statement, were sufficient to meet all certificates as they mature by their terms with a surplus of \$3,833,760 (or 35.32%) above the statutory standards.

Ratios of assets to liabilities: 2010-135.32%; 2009-135.58%; 2008-138.19%; 2007-150.88%; 2006-154.04%.

Sincerely,  
**Allan Ferrone, FSA, MAAA**  
Actuary